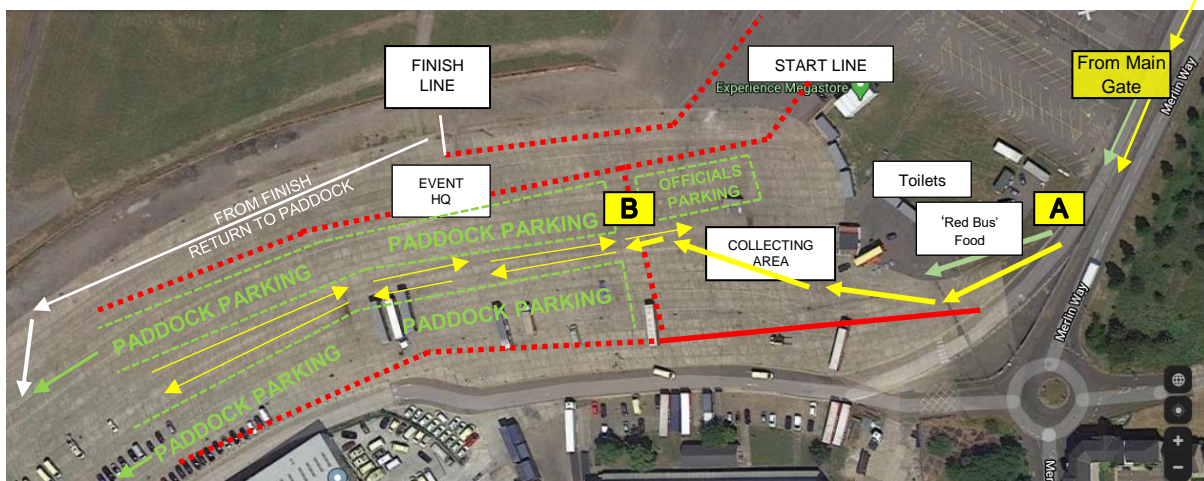


Arrival Instructions at North Weald

Go around the roundabout in Merlin Way, and back up to the main security gate, display pass. The address is Merlin Way, North Weald, CM16 6HR.

Sat Nav Co-ordinates 51°43'03.5"N, 0°09'36.8"E (51.717642, 0.160233)



Once through the entry gate go left and proceed round the perimeter track to point A on the above diagram.

At point A: You will be met by officials to whom you should display your entry pass. This confirms your right of entry and you will be directed as follows:

- Marshals and Officials should follow the GREEN arrow, Officials should park in the 'Officials Parking' area, course marshals can park in the collecting area (where the Red Bus food outlet will be located) before proceeding directly to their marshal post.
- Competitors and support team members should follow the YELLOW arrow to the Paddock Entrance, Point B.

At point B: Competitors should display their competitor number (on their entry pass) to the entry official so they can be checked off the entry list. This is required because, with no signing on at the venue, we need to know which competitors have actually arrived. You will then be directed to park in the paddock. Cars are required to park 6 metres apart and with at least a 6 metre pathway between the rows.

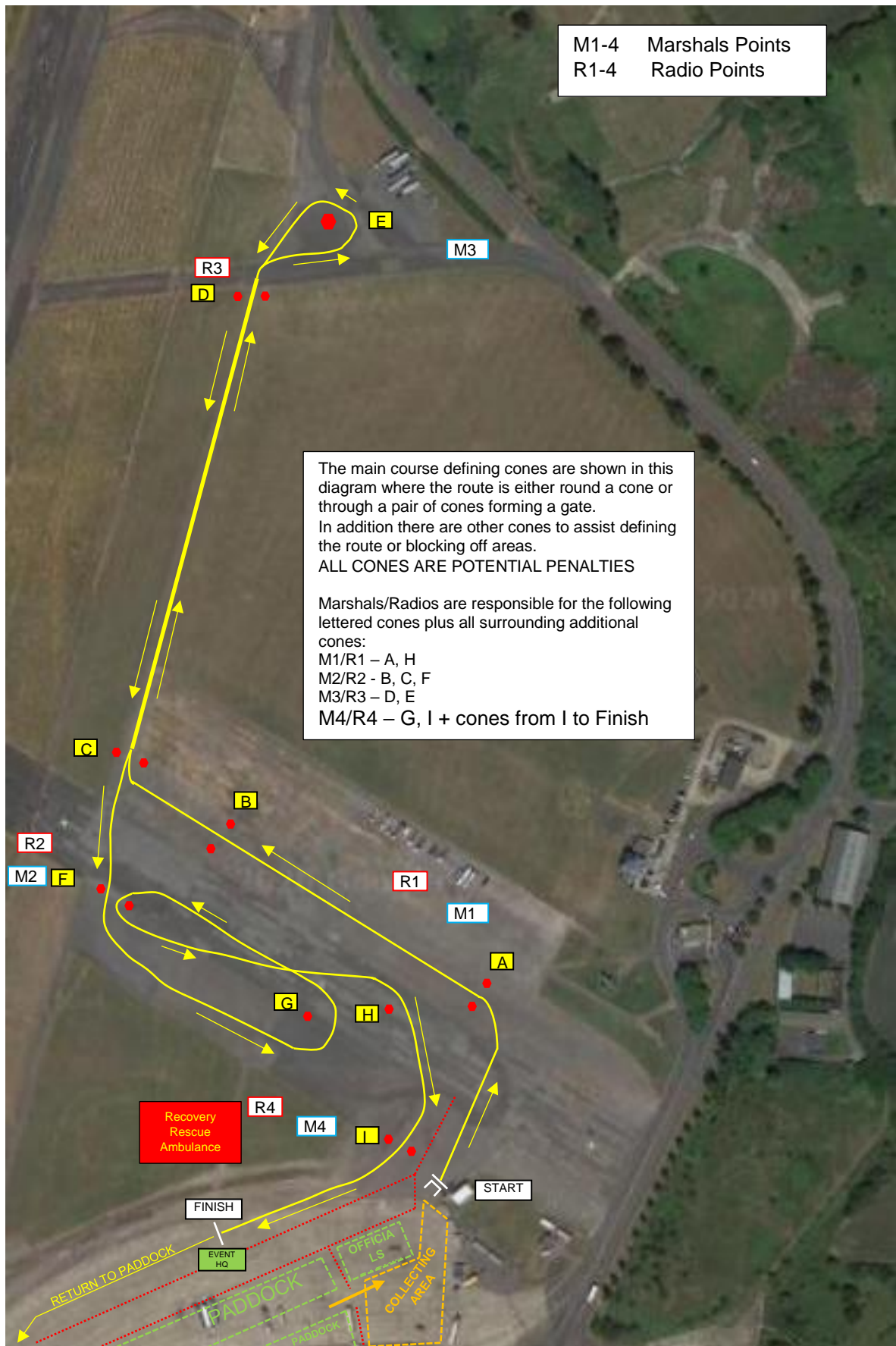
For competitors to access the Start Line they will be able to go from the paddock at point B into the collecting area, where the necessary formalities of noise check and vehicle inspection (scrutineering) will be performed on the approach to the start.

- Only the competing car with their driver is allowed in the Collecting Area.
- In the case where external assistance is required for the normal starting of the car, for example if an external battery pack is required, then one additional team member will be allowed taking appropriate PPE measures.
- Dual driver cars will need to return to the paddock following their run, where the car contact points can be sanitized by the competitor and the driver swap take place as per Motorsport UK guidelines.

We are trying to make this as simple as possible while complying with all the government and Motorsport guidelines and requirements and appreciate everyone's assistance and patience in complying with the procedures that have had to be put in place.

If there are any questions or queries then please contact any of the officials or marshals, there will be officials roaming the area. We will do our best to make things run as normally as we possibly can considering the current circumstances.

Course Diagram



M1-4 Marshals Points
 R1-4 Radio Points

The main course defining cones are shown in this diagram where the route is either round a cone or through a pair of cones forming a gate.
 In addition there are other cones to assist defining the route or blocking off areas.
ALL CONES ARE POTENTIAL PENALTIES

Marshals/Radios are responsible for the following lettered cones plus all surrounding additional cones:
 M1/R1 – A, H
 M2/R2 - B, C, F
 M3/R3 – D, E
 M4/R4 – G, I + cones from I to Finish